



creative emotions

technical hobbies



...ation creative  
...e di modellare in modo creativo  
...a di modellare in modo creativo  
...a di modellare in modo creativo

efco creative emotions  
**Reliefco 250**

efco creative emotions  
**Reliefco-light**  
50%  
...a di modellare in modo creativo



...a di modellare in modo creativo  
...a di modellare in modo creativo  
**CREA-STONE**  
efco creative emotions  
19 244 02

Reliefco - light is made from natural plaster. This product is particularly suitable for manufacturing lightweight models that are easy to handle.  
Reliefco - light est produit à partir de gypse naturel. Ce produit est spécialement adapté pour la réalisation de modèles légers et faciles à manipuler.  
Reliefco - light is made from natural plaster. Questo prodotto è particolarmente adatto per realizzare modelli leggeri e facili da maneggiare.

**Specksteinöl**  
...a di modellare in modo creativo  
...a di modellare in modo creativo  
...a di modellare in modo creativo

**SPECKSTEINPOLITUR**  
...a di modellare in modo creativo  
...a di modellare in modo creativo  
...a di modellare in modo creativo





### Clay Westerwald:

<b>42 052 94</b>	Clay white, 40% chamotte 980 – 1150 °C, 0 – 0,5 mm	✗	SQ: 10 KG
<b>42 052 95</b>	Clay red, 40% chamotte 980 – 1150 °C, 0 – 0,5 mm	✗	SQ: 10 KG
<b>42 052 96</b>	Clay black, 40% chamotte 980 – 1150 °C, 0 – 0,5 mm	✗	SQ: 10 KG
<b>42 052 97</b>	Clay leather coloured, 40% chamotte 980 – 1150 °C, 0 – 0,5 mm	✗	SQ: 10 KG

### Clay Westerwald:

<b>42 053 87</b>	Clay white, 1.000 – 1.300°C, 0 – 0,5 mm	✗	SQ: 10 KG
------------------	---	---	-----------

### Modelling firing clay Westerwald:

<b>42 053 83</b>	Modelling firing clay white, 25 % chamotte 980 – 1100 °C, 0 – 1 mm	✗	SQ: 10 KG
------------------	--	---	-----------

### Modelling firing clay Westerwald:

<b>42 053 88</b>	Modelling firing clay white, 1.000 – 1.300 °C, 0 – 1 mm	✗	SQ: 10 KG
<b>42 053 84</b>	Modelling firing clay red, 25 % chamotte 1000 – 1200 °C, 0 – 1 mm	✗	SQ: 10 KG
<b>42 053 85</b>	Modelling firing clay black, 25 % chamotte 1000 – 1150 °C, 0 – 1 mm	✗	SQ: 10 KG
<b>42 053 86</b>	Modelling firing clay leather, 25 % chamotte 1000 – 1280 °C, 0 – 1 mm	✗	SQ: 10 KG

### Modelling firing clay special Westerwald:

<b>42 054 05</b>	Modell. firing clay Ind.Summer, 40% chamotte 1000 – 1350 °C, 0 – 0,5 mm	✗	SQ: 10 KG
<b>42 054 06</b>	Modell. firing clay Ind.Summer, 40% chamotte 1000 – 1350 °C, 0 – 2,0 mm	✗	SQ: 10 KG

### Clay for schools Westerwald:

<b>42 054 03</b>	Clay for schools white, 25 % chamotte 1000 – 1150 °C, 0 – 0,5 mm	✗	SQ: 10 KG
<b>42 054 04</b>	Clay for schools red, 25 % chamotte 1000 – 1150 °C, 0 – 0,5 mm	✗	SQ: 10 KG

### Fibrous clay stoneware Westerwald:

<b>42 054 02</b>	Fibrous clay stoneware white, 1000 – 1300 °C	✗	SQ: 10 KG
------------------	--	---	-----------

### Clay for potter's wheel Westerwald:

<b>42 053 80</b>	Clay for potter's wheel white, 980-1.100 C	✗	SQ: 10 KG
------------------	--	---	-----------

### Clay for potter's wheel Westerwald:

<b>42 053 89</b>	Clay for potter's wheel white, 1.000 – 1.300 °C	✗	SQ: 10 KG
<b>42 053 81</b>	Clay for potter's wheel red, 1.000-1.200 C	✗	SQ: 10 KG
<b>42 053 82</b>	Clay for potter's wheel black, 1.000-1.130 C	✗	SQ: 10 KG
<b>42 053 79</b>	Clay for potter's wheel leather, 1.000-1.280C	✗	SQ: 10 KG

### Porcelain Westerwald:

<b>42 054 01</b>	Porcelain snowwhite, firing temp. 1.230 – 1.300 °C	✗	SQ: 10 KG
------------------	--	---	-----------

### Porcelain slip for casting Westerwald:

<b>42 054 50</b>	Porcelain slip snow-white, firing temp. 1230 – 1300°C	✗	SQ: 1 BUCKET
------------------	---	---	--------------

Clay prices are quoted net, ex works Westerwald. Minimum quantity for clay assortments is 500kg (max 1,000 kg / pallet).

## Dutch river clay:

**40 100 10** Dutch river clay grey / terra, 950 SQ: 10 KG  
- 1100 °C

## Dutch modelling firing clay fine:

**40 100 30** Modelling firing clay wht/wht, 940 SQ: 10 KG  
- 1100 °C, fine 0,5

**40 100 31** Modelling firing clay yell/red, 840 SQ: 10 KG  
- 1080 °C, fine 0,5

**40 100 32** Modelling firing clay blk/dbro, 940 SQ: 10 KG  
- 1100 °C, fine 0,5

**40 100 33** Modelling firing clay red/terr, 980 SQ: 10 KG  
- 1160 °C, fine 0,5

## Dutch modelling firing clay coarse:

**40 100 40** Modelling firing clay wht/wht, 940 SQ: 10 KG  
- 1100 °C, coarse -2,0

**40 100 41** Modelling firing clay yell/red, 840 SQ: 10 KG  
- 1080 °C, coarse -2,0

**40 100 42** Modelling firing clay blk/dbro, 940 SQ: 10 KG  
- 1100 °C, coarse -2,0

**40 100 43** Modelling firing clay red/terr, 980 SQ: 10 KG  
- 1160 °C, coarse -2,0

## Dutch potter's wheel clay:

**40 100 20** Potter's wheel clay white/whit, 940 SQ: 10 KG  
- 1100 °C

**40 100 21** Potter's wheel clay yellow/red, 840 SQ: 10 KG  
- 1080 °C

**40 100 22** Potter's wheel clay, black/dark-  
brown 940 - 1100 °C SQ: 10 KG

**40 100 23** Potter's wheel clay red/terra, 980 SQ: 10 KG  
- 1160 °C

## Dutch casting clay:

**40 101 00** Casting clay white / white, 940 SQ: 1 BUCKET  
- 1100 °C, 5,5 l

**40 101 01** Casting clay yellow / red, 840 SQ: 1 BUCKET  
- 1080 °C, 5,5 l

**40 101 02** Casting clay black/darkbrown, 940 SQ: 1 BUCKET  
- 1100 °C, 5,5 l

Clay prices are quoted net, ex works Holland. Minimum quantity for clay assortments is 500kg (max 1,000 kg / pallet).



85



96

## Glue medium / Chamottepowder:

**41 050 85** Glue medium, granules, 200 g SQ: 1 PIECE

**41 253 96** Chamottepowder, 1 kg SQ: 1 BAG



80 / white



81 / yellow



82 / dark red



83 / yellow-brown



84 / reddish brown



85 / light blue



86 / dark blue



87 / spring-green



88 / blue-green



89 / black



90 / light grey



91 / bright pink

## Paint Majolika:

**41 051 ..** Paint Majolika in pots, firing-scope: SQ: 5 PIECE  
980 - 1200 °C, 5 g



assorted

## Paint Majolika:

**41 051 78** Paint Majolika in pots, firing-scope: SQ: 1 PIECE  
980 - 1200 °C, 12 pcs.



## Medium of separation:

**41 253 99** Medium of separation, Ready mix SQ: 1 CUP  
for appliance, 700 g



79 22 / superwhite sheen



88 16 / mussel-white



79 32 / white opal



79 10 / transparent sheen



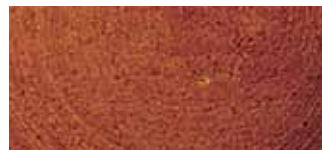
75 01 / bahamas



79 20 / lemon sheen



79 06 / sunny-yellow sheen



79 12 / honey sheen



79 13 / peony sheen



79 14 / poppy



79 08 / wine-red sheen



79 27 / aubergine sheen



79 42 / lightblue sheen



79 04 / cobaltblue sheen



79 05 / bottlegreen sheen



79 25 / grey sheen



79 16 / black sheen



88 18 / gold bronze



### Powder enamel:

39 0.. .. Powder enamel, firing-scope: 1020 SQ: 1 CUP  
 – 1080 °C, 250 g

39 1.. .. Powder enamel, firing-scope: 1020 SQ: 1 CUP  
 – 1080 °C, 750 g

### Liquid enamel:

38 0.. .. Liquid enamel, firing-scope: 1020 SQ: 1 CUP  
 – 1060 °C, 230 ml



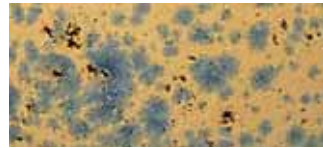
80 63 / daisy



78 52 / meteorite



78 57 / tiger lily



78 58 / valencia



78 81 / supra



80 42 / terracotta



78 59 / terracotta stone



80 95 / indiansummer



80 47 / rust-brown



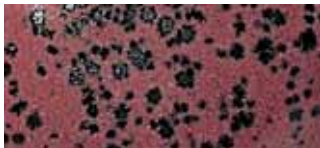
75 10 / tiger's eye



85 42 / poppy



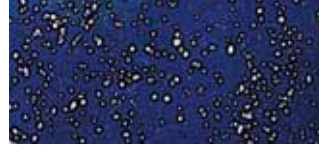
78 54 / carmen



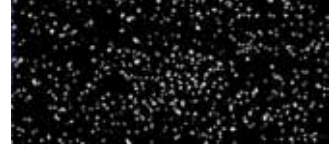
22 60 / tiffany wine-red



22 30 / tiffany blue-violet



79 70 / cleopatra



79 72 / dama de noche



88 06 / aquamarin



22 29 / tiffany green



89 39 / starlet



88 01 / ocean



89 35 / granada



89 31 / slate



75 14 / Madagascar



75 09 / ceylon



80 48 / antique green



89 38 / supernova



85 43 / alligator



80 90 / crocodei



85 41 / hawaii



78 46 / aster



22 27 / aege



88 50 / oilspot

### Powder enamel:

39 0.. .. Powder enamel, firing-scope: 1020      SQ: 1 CUP  
 – 1080 °C, 250 g

39 1.. .. Powder enamel, firing-scope: 1020      SQ: 1 CUP  
 – 1080 °C, 750 g

### Liquid enamel:

38 0.. .. Liquid enamel, firing-scope: 1020      SQ: 1 CUP  
 – 1060 °C, 230 ml



37 / untreated



38 / untreated



45 / untreated



46 / untreated



39 / untreated



40 / untreated



47 / untreated



48 / untreated



41 / untreated



42 / untreated



65 / untreated



66 / untreated



43 / untreated



44 / untreated



67 / untreated

## Modelling tool:

**18 253 37** Modelling tool wood, 20 cm, 1 pc. SQ: 6 PIECE

**18 253 38** Modelling tool wood, 19 cm, 1 pc. SQ: 6 PIECE

**18 253 39** Modelling tool wood, 20 cm, 1 pc. SQ: 6 PIECE

**18 253 40** Modelling tool wood, 20 cm, 1 pc. SQ: 6 PIECE

**18 253 41** Modelling tool wood, 20 cm, 1 pc. SQ: 6 PIECE

**18 253 42** Modelling tool wood, 20 cm, 1 pc. SQ: 6 PIECE

**18 253 43** Modelling tool wood, 21 cm, 1 pc. SQ: 6 PIECE

**18 253 44** Modelling tool wood, 19 cm, 1 pc. SQ: 6 PIECE

## Modelling tool:

**18 253 45** Modelling tool wood, 20 cm, 1 pc. SQ: 6 PIECE

**18 253 46** Modelling tool wood, 20 cm, 1 pc. SQ: 6 PIECE

**18 253 47** Modelling tool wood, 20 cm, 1 pc. SQ: 6 PIECE

**18 253 48** Modelling tool wood, 20 cm, 1 pc. SQ: 6 PIECE

**18 253 65** Modelling tool wood, 20 cm, 1 pc. SQ: 6 PIECE

**18 253 66** Modelling tool wood, 20 cm, 1 pc. SQ: 6 PIECE

**18 253 67** Modelling tool wood, 20 cm, 1 pc. SQ: 6 PIECE



21 / untreated



22 / untreated



23 / untreated



25 / untreated



36 / untreated

### Modelling tool wood:

- 18 253 21** Modelling tool wood, half-round, 115 x 50 mm, 1 pc. SQ: 3 PIECE
- 18 253 22** Modelling tool wood, angular, 100 x 50 mm, 1 pc. SQ: 3 PIECE
- 18 253 23** Modelling tool wood, oval, 105 x 65 mm, 1 pc. SQ: 3 PIECE
- 18 253 25** Modelling tool wood, 105 x 50 mm, 1 pc. SQ: 3 PIECE
- 18 253 36** Modelling tool wood, 180 x 32 mm, 1 pc. SQ: 3 PIECE



18



19

### Roll cutter:

- 18 253 18** Roll cutter, wood / metall, ø 13 mm x 13,5 cm, 1 pc. SQ: 3 PIECE
- 18 253 19** Roll cutter, wood / metal, ø 19 mm x 12,5 cm, 1 pc. SQ: 3 PIECE



31



32



33



53

### Modelling tool:

- 18 253 31** Modelling tool, wood / metall - 5331, 22 cm, 1 pc. SQ: 3 PIECE
- 18 253 32** Modelling tool, wood / metall - 5332, 22 cm, 1 pc. SQ: 3 PIECE
- 18 253 33** Modelling tool, wood / metall - 5333, 22 cm, 1 pc. SQ: 3 PIECE
- 18 254 53** Modelling tool, wood / metall - 5453, 21 cm, 1 pc. SQ: 3 PIECE



### Cutting wire for clay:

- 18 253 17** Cutting wire for clay, wood / wire - 5317, 660 mm, 1 pc. SQ: 3 PIECE



### Modelling tool set:

- 18 230 00** Modelling tool set, pottery / 8 parts SQ: 1 SET



60



06

### Modelling tool set:

**18 227 60** Modelling tool set, 6 parts, 20 cm SQ: 2 SET

**18 228 06** Modelling knife set, 6 parts, 13 cm SQ: 2 PIECE



### Clay knife:

**18 253 15** Clay knife, wooden handle, 175 mm, 1 pc. SQ: 1 PIECE



06



07



### Punch:

**18 253 14** Punch, wooden handle, ø 12 mm x 155 mm, 1 pc. SQ: 3 PIECE



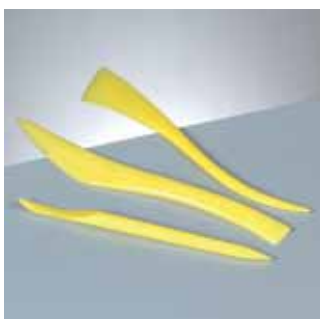
08

### Modelling tool set wood:

**18 226 06** Modelling tool set wood, 6 parts, 20 cm SQ: 2 PIECE

**18 226 07** Modelling tool set wood, 6 parts, 15 cm SQ: 3 SET

**18 226 08** Modelling tool set wood, 5 parts, 20 cm SQ: 2 SET



03

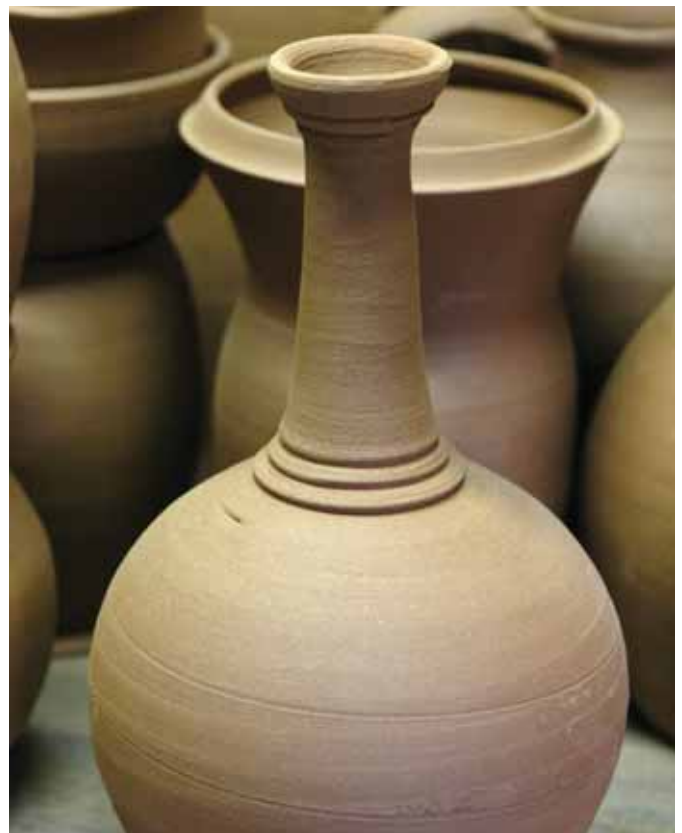


04

### Modelling set plastic:

**18 229 03** Modelling tool set, plastic, 3 parts, 15 cm SQ: 5 PIECE

**18 229 04** Modelling tool set, plastic, 5 parts, 15 cm SQ: 5 SET





blue

### Rubber scraper:

**18 253 56** Rubber scraper, 10,5 × 5,5 cm,  
1 pc.

SQ: 3 PIECE



### Furnace plier:

**18 253 29** Furnace plier, metal, 310 mm

SQ: 1 PIECE



### Modelling and painting sponge:

**18 230 04** Modelling and painting sponge,  
ø 7 × 3 cm, 1 pc.

SQ: 10 PIECE



### Turntable:

**18 100 00** Turntable, ø 18 × H 11 cm

SQ: 1 PIECE



### Claw aluminium:

**18 253 70** Claw aluminium, small, 20 cm

SQ: 3 PIECE

**18 253 71** Claw aluminium, medium, 25 cm

SQ: 3 PIECE

**18 253 72** Claw aluminium, big, 30 cm

SQ: 3 PIECE



### Working glove:

**18 253 28** Working glove, heat-dam, B  
13 × 25 cm

SQ: 1 PAIR





04 / grey



08 / grey

### Stoneplast:

**19 220 04** Stoneplast, air-hardening, 400 g SQ: 5 PIECE

**19 220 08** Stoneplast, air-hardening, 800 g SQ: 2 PIECE

### Stoneplast:

Model building material made from real granite sand: Very smooth, pliable, air-drying modelling clay for stone or granite effect.



terracotta

### Keramiplast:

**19 221 01** Keramiplast, air-hardening, 500 g SQ: 5 PIECE

**19 221 75** Keramiplast, air-hardening, 500 g SQ: 5 PIECE

**19 222 01** Keramiplast, air-hardening, 1.000 g SQ: 2 PIECE

**19 222 75** Keramiplast, air-hardening, 1.000 g SQ: 2 PIECE

### Keramiplast:

Keramiplast is a ready for use, high-quality modelling clay, similar to clay with excellent processing qualities. This modelling material is very smooth, has a high stability and hardens in the air. Keramiplast is made from untreated Ceramic materials. Once opened, store Keramiplast in an airtight container or wrapped in a damp cloth to retain softness. Once hard, Keramiplast projects may be drilled, ground, filed or painted as desired.



grey

### Plasticene modelling clay:

**19 215 01** Plasticene modelling clay, 500 g SQ: 5 PIECE



white

### Softplast:

**19 223 01** Softplast, air-hardening, 250 g SQ: 2 PIECE

### Softplast:

Softplast is a super light, air-hardening modelling clay. This ready for use natural product is safe to use and nonirritant. Use only the amount that you need and once opened, Softplast will keep for several days if stored in an airtight container. Knead for a few minutes to soften. Softplast works well on surfaces such as polystyrene, wood, glass, ceramics or plastics and is ideal for building projects. The surface becomes touch-dry in the air within minutes. Drying time depends on the atmosphere and the thickness of the project but should take between 1-2 days. If Softplast is dried out too quickly (i.e. in the oven) cracks may appear. The completed project may be filed, drilled, painted and varnished as desired (Decoupaint is an ideal water based paint to use.)





### Papermaché:

**19 227 20** Papermaché, 200 g

SQ: 5 PIECE

#### Papermaché:

Inexpensive, modelling material prepared with water. Papermaché is produced from natural untreated materials, is safe to use and non-irritant. Objects made from papermaché can be drilled, sawn, ground and painted as desired.



02 / white



10 / white



15 / white

### Modelling binder:

**19 110 02** Plaster Bandages, 80 mm × 3 m

SQ: 5 PIECE

**19 111 10** Plaster Bandages,  
100 mm × 4,6 m

SQ: 6 PIECE

**19 111 15** Plaster Bandages,  
150 mm × 4,6 m

SQ: 6 PIECE

#### Plaster bandages

#### Processing:

Use whole bandage or cut off a strip as required and dip in water for 1-2 seconds. Press gently, spread on the desired base and smoothen gently. Every third or fourth layer may be spread on dry. Use roller (suitable for wall-paper) to distribute evenly. For small models 1-2 layers are sufficient. For larger models 6-8 layers are necessary for stability.



### Plastiform:

**19 225 20** Plastiform, 200 g

SQ: 5 PIECE

#### Plastiform:

New extra light, flexible, air dried, soft, odourless and relatively stable modelling clay. Ready to shape and becomes more flexible if used with Thinners. Ensure hands are dry. Roll between two foils to make thin sheets. Thin sheets can be easily cut with scissors or punched. Cracks can be repaired by using a little fresh clay. Clay can be painted with Water colours, Acrylics etc. It is not water or weather resistant but can be protected by using a Varnish. e.g. It is easy to shape the Child's Hands as the clay is soft and pliable and you can see the smallest detail.



white

### Flexplast:

**19 226 05** Flexplast, air-hardening, 50 g

SQ: 10 PIECE

#### Flexplast:

New extra lightl, flexibly, air drying, softy, odourless, relatively stable modelling clay! Ready to shape, it becomes more flexibly, if modulate thinner. To process with dry hands; only easily moisten at the parts, which are connected with each other. Can be rolled between two foils to thin sheets. Thin sheets can be easily cut with scissors or be punched. Objects with cracks can be repaired simply with a little bit fresh clay. Can be painted with watercolours, acrylic colours etc. It is not resistant to water and resistant to weather, however, can be protected with varnish. E.g. to shape child hands is very easy, because the clay is very soft, in addition, you can see every smallest detail. You can also cast out imprints with Reliefco casting clay.



white

### Casting subst. Reliecco light:

**19 228 01** Casting subst. Reliecco light, 500 g  SQ: 5 BAG

**19 228 25** Casting subst. Reliecco light SQ: 25 KG

#### Reliecco light:

Reliecco light is made from natural plaster. This product is particularly suitable for manufacturing lightweight models that are accurate in every detail. Reliecco-light products are not weatherproof.



### Easyform Quick-casting-paste:

**95 759 00** Easyform quick-casting-paste, 450 g SQ: 3 PIECE

#### Easyform Quick-mould:

a natural mould making medium with quick curing time. Mixing ratio: 3 parts water to 1 part easy form powder. Curing time: approx. 8 – 10 minutes.

Easy form is ideal for the quick and smooth moulding of nearly all objects, for example reliefs, figures, fossils etc. Porous objects like wood, unglazed ceramics, must be first given a coat of gloss varnish with Decoupaint transparent varnish (article 93 169 04). Easy form quick-mould is pH neutral and can be safely used in contact with the skin, e.g. to make moulds of hands and feet. After curing, the finished shapes can be immediately removed from the mould. Suitable all ceramic casting materials (e.g. Reliecco or Reliecco light), casting resin, wax or glycerine soap.



### Hooks for casting:

**19 235 01** Hooks for casting, (PS), 25 mm / 13 mm, 6 pcs.  SQ: 10 BAG

**19 235 02** Hooks for casting, (PS), 25 mm / 13 mm, 100 pcs. SQ: 1 BAG

**19 235 03** Hooks for casting, (PS), 25 mm / 13 mm, 1.000 pcs. SQ: 1 BAG



white

### Casting subst. Reliecco 250:

**19 229 01** Casting subst. Reliecco 250, 1 kg SQ: 9 PIECE

**19 229 05** Casting subst. Reliecco 250, 5 kg SQ: 4 PIECE

**19 229 25** Casting subst. Reliecco 250, 25 kg SQ: 1 PIECE

#### Moulding medium Reliecco 250:

This is an inexpensive pouring mass for many applications within the craft and hobby world. Reliecco 250 is a refined pouring powder for detailed pouring of decorative reliefs and landscapes. Safe to use, eco friendly, mixable with water, hard, white, air-hardening.



white

### Casting subst. Reliecco 300:

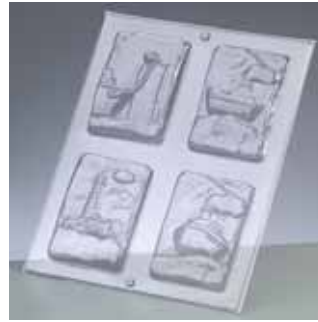
**19 231 01** Casting subst. Reliecco 300, 1 kg SQ: 5 PIECE

**19 231 05** Casting subst. Reliecco 300, 5 kg SQ: 4 PIECE

**19 231 25** Casting subst. Reliecco 300, 25 kg SQ: 1 PIECE

#### Moulding medium Reliecco 300:

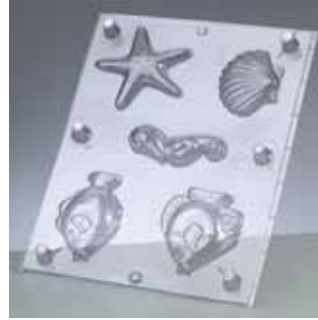
The high-quality pouring material for all applications, which should satisfy the most discerning hobbyist. This highly refined pouring powder is superb for use in creating detailed, decorative reliefs and landscapes. Safe to use, eco friendly, simply mixable with water, ultra hard, ultra white, air-hardening, weather proof, thick surface.



36



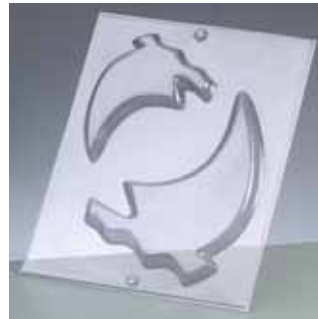
58



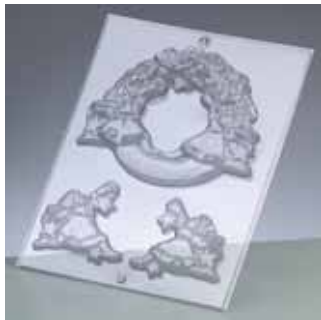
08



09



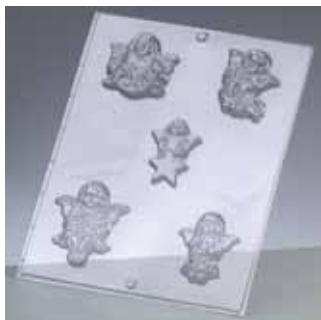
76



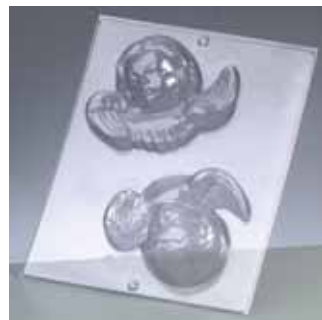
54



07



23



41

**Relief moulds:**

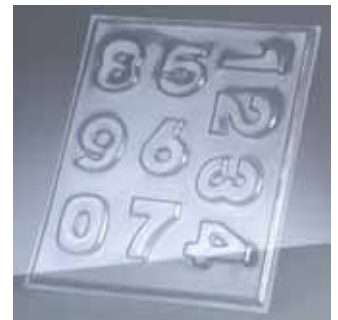
- 95 000 54 Relief moul, mobile christmas / 3 parts, 18 cm ☛ SQ: 1 PIECE
- 95 001 07 Relief mould, Christmas motifs / 6 parts, 3 – 7 cm ☛ SQ: 1 PIECE
- 95 001 23 Relief mould, angels / 5 parts, 6 – 8 cm ☛ SQ: 1 PIECE
- 95 001 41 Relief mould, angels / 2 parts, 10 cm ☛ SQ: 1 PIECE

**Relief moulds:**

- 95 000 36 Reliefo mould, ships + lighthouse / 4 parts, 7 × 10 cm ☛ SQ: 1 PIECE
- 95 000 58 Relief mould, lighthouse / 1 part, 12 × 22 cm ☛ SQ: 1 PIECE
- 95 001 08 Relief mould, maritime / 5 parts, 5 – 8 cm ☛ SQ: 1 PIECE
- 95 001 09 Relief mould, ocean animals / 4 parts, 9 cm ☛ SQ: 1 PIECE
- 95 001 76 Relief mould, ships, 2 parts, h 12 – 16 cm ☛ SQ: 1 PIECE



60



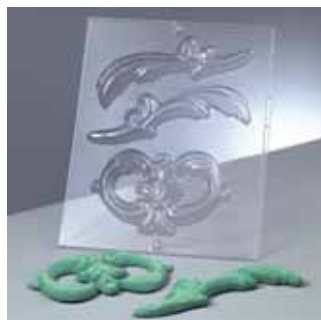
61

**Relief moulds:**

- 95 001 60 Relief mould, Letters A – Z / 26 parts, h 4 cm, 2 forms ☛ SQ: 1 PIECE
- 95 001 61 Relief mould, Numbers 0 – 9 / 10 parts, h 4 cm ☛ SQ: 1 PIECE



47



48



46



55



49



51



52



53



54



70

**Relief moulds:**

**95 001 46** Relief mould, ornaments, 7 parts, h 4-10 cm  SQ: 1 PIECE

**95 001 55** Relief mould, ornaments, 3 parts, h 6-11 cm  SQ: 1 PIECE



74



79



80





81





82


**Relief moulds:**


**95 001 47** Relief mould, ornaments, 3 parts, h 14-16 cm  SQ: 1 PIECE


**95 001 48** Relief mould, ornaments, 3 parts, h 8-16 cm  SQ: 1 PIECE


**95 001 49** Relief mould, ornaments, 5 parts, h 4-12 cm  SQ: 1 PIECE

**95 001 51** Relief mould, ornaments, 3 parts, h 12-16 cm  SQ: 1 PIECE


**95 001 52** Relief mould, ornaments, 8 parts, h 4-8 cm  SQ: 1 PIECE


**95 001 53** Relief mould, ornaments, 6 parts, h 3-10 cm  SQ: 1 PIECE


**95 001 54** Relief mould, ornaments, 3 parts, h 11-20 cm  SQ: 1 PIECE


**95 001 70** Relief mould, ornaments, 4 parts, h 10 - 30 cm  SQ: 1 PIECE


**Relief moulds:**

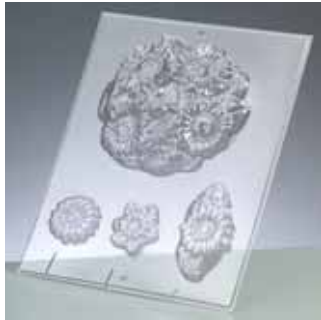
**95 001 74** Relief mould, ornaments, 3 parts, h 33 cm  SQ: 1 PIECE

**95 001 79** Relief mould, ornaments / 2 parts, h 13 + 18 cm  SQ: 1 PIECE

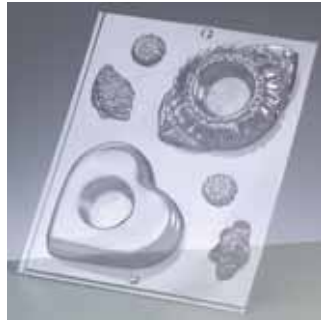
**95 001 80** Relief mould, ornaments / 5 parts, h 3-13 cm  SQ: 1 PIECE

**95 001 81** Relief mould, ornaments / 3 parts, h 10-17 cm  SQ: 1 PIECE

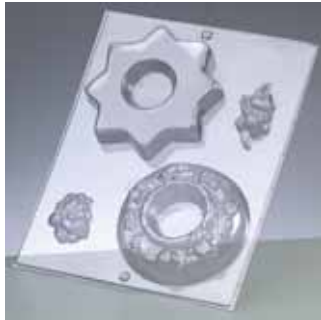
**95 001 82** Relief mould, ornaments / 3 parts, h 13-23 cm  SQ: 1 PIECE



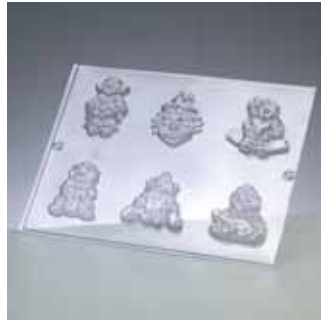
43



46



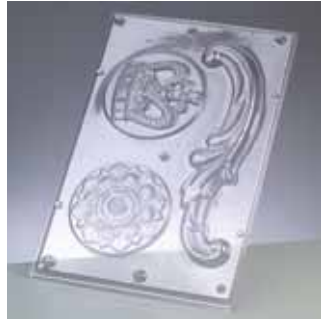
55



33



67



75

### Relief moulds:

- 95 000 43 Reliefco mould, sunflowers / 4 parts, 13,5 cm SQ: 1 PIECE
- 95 000 46 Reliefco mould, ornamental light / 2 parts, 12 cm SQ: 1 PIECE
- 95 000 55 Relief mould, night-lights / 4 parts, 12 cm SQ: 1 PIECE
- 95 001 33 Relief mould, clowns, 6 parts, 5,5 cm SQ: 1 PIECE
- 95 001 67 Relief mould, Border / 2 parts, h 18 cm SQ: 1 PIECE
- 95 001 75 Relief mould, crown, flower, ornam., 3 parts, h 11-30 cm SQ: 1 PIECE



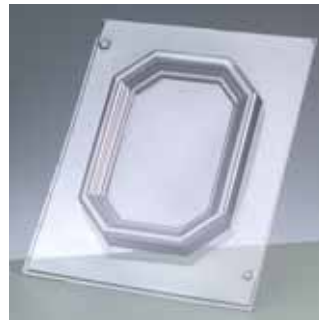
71



73

### Relief moulds:

- 95 001 71 Relief mould, ball-shaped vase, big / 1 part, h 26 x 20 cm SQ: 1 PIECE
- 95 001 73 Relief mould, amphora / 2 parts, h 22 + 34 cm SQ: 1 PIECE



18



57



58

### Relief moulds:

- 95 001 18 Relief mould, frame octagonal / 1 part, 13 x 17,5 cm SQ: 1 PIECE
- 95 001 57 Relief mould, Frame bear / 1 part, 17,5 x 13,5 cm SQ: 1 PIECE
- 95 001 58 Relief mould, Frame oval / 1 part, 17,5 x 13,5 cm SQ: 1 PIECE



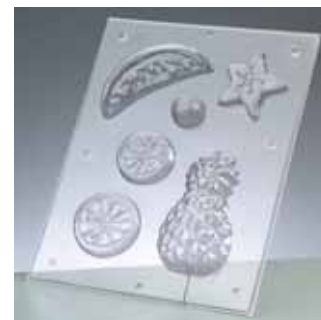
48



05



44



45



24



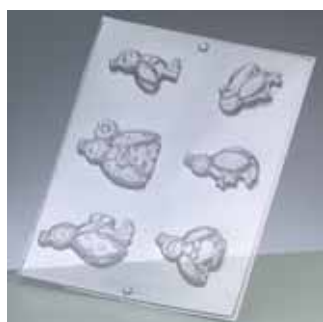
59

### Relief moulds:

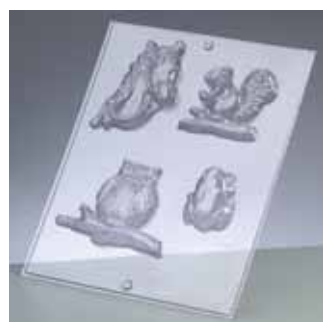
- 95 000 48** Reliefco mould, bear with moon / 4 parts, 18 cm SQ: 1 PIECE
- 95 001 05** Relief mould, sun, moon, stars / 3 parts, ø 11 cm SQ: 1 PIECE
- 95 001 24** Relief mould, sun,moon,stars / 4 parts, 5 – 8 cm SQ: 1 PIECE

### Relief moulds:

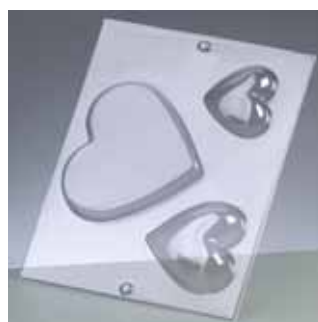
- 95 000 44** Reliefco mould, fruit / 5 parts, 5 – 12 cm SQ: 1 PIECE
- 95 000 45** Reliefco mould, fruit / 6 parts, 3 – 12 cm SQ: 1 PIECE
- 95 001 59** Relief mould, Vegetables / 7 parts, 5 – 8 cm SQ: 1 PIECE



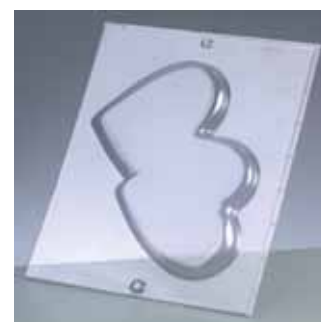
41



52



77



78



04



27

### Relief moulds:

- 95 001 77** Relief mould, hearts, 3 parts, h 6 – 11 cm SQ: 1 PIECE
- 95 001 78** Relief mould, heart, double, 1 part, h 15 cm SQ: 1 PIECE

### Relief moulds:

- 95 000 41** Reliefco mould, ladybird / 6 parts, 5,5 x 7 cm SQ: 1 PIECE
- 95 000 52** Relief mould, animals / 4 parts, 6 – 8 cm SQ: 1 PIECE
- 95 001 04** Relief mould, geese / 4 parts, 10 cm SQ: 1 PIECE
- 95 001 27** Relief mould, animals on the farm / 7 parts, 3 – 5 cm SQ: 1 PIECE



89 / black



02



### Latex milk:

<b>95 795 89</b>	Latex milk, 200 ml	SQ: 2 PIECE
<b>95 800 02</b>	Latex milk, 200 ml	SQ: 2 PIECE
<b>95 800 05</b>	Latex milk, 500 ml	SQ: 2 PIECE
<b>95 800 10</b>	Latex milk, 1.000 ml	SQ: 1 PIECE
<b>95 800 50</b>	Latex milk, 5.000 ml	SQ: 1 PIECE

### Latex milk:

EFCO Latex milk is a water-based mould making material for the production of seamless tube shapes and for relief mouldings. Dip the parts to be moulded in Latex Milk or apply with a paintbrush. Repeat until the latex skin is thick enough for the purpose required. The mould can be reinforced by applying a layer of EFCO latex paste.



### Latex paste:

<b>95 801 05</b>	Latex paste, 500 g	SQ: 2 PIECE
<b>95 801 10</b>	Latex paste, 1.000 g	SQ: 1 PIECE
<b>95 801 80</b>	Latex paste, 8.000 g	SQ: 1 PIECE



14 / orange



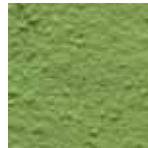
28 / red



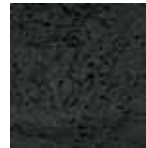
35 / bright pink



48 / blue



67 / green



89 / black

### Latex toner:

<b>95 803 ..</b>	Latex toner, 50 ml	SQ: 4 PIECE
------------------	--------------------	-------------

### Latex toner:

This powder makes approx. 500 g of latex milk or latex paste. Add desired amount of powder to latex milk in a lidded container and shake well. Leave 10 minutes to react and repeat process. Now the latex milk is ready for use. If you use latex paste – stir a small quantity of powder into the paste until the powder is thoroughly mixed in. Leave 10 minutes to rest and repeat the process. Now the latex paste is ready for use.



05



10

### Silicone rubber HB:

- |                  |   |             |
|------------------|---|-------------|
| <b>95 750 05</b> | Silicone rubber HB, with binder,<br>500 g   | SQ: 4 PIECE |
| <b>95 750 10</b> | Silicone rubber HB, with binder,<br>1.000 g | SQ: 2 PIECE |
| <b>95 750 50</b> | Silicone rubber HB, with binder,<br>5.000 g | SQ: 1 PIECE |

### Silicone rubber HB:

Cold vulcanising, solvent free, slight expansion. Highly heatresistant material for moulds to cast lead and tin.



white / yellow

### Silicon mould putty:

- |                  |   |           |
|------------------|---|-----------|
| <b>95 749 02</b> | Silicon mould putty, 2 components,<br>100 g + 100 g | SQ: 1 SET |
|------------------|---|-----------|

Quick and easy to use, non-toxic and safe! Firm kneadable material for making your own moulds / moulds for resin, chocolate, soap, wax, modelling and casting materials and much more. Take equal amounts of white and yellow putty, knead well, so that the colours are totally intermixed, and form round the object to be moulded. A mould in less than 25 minutes!



### Talcum powder:

- |                  |                     |             |
|------------------|---------------------|-------------|
| <b>95 805 20</b> | Talcum powder, 20 g | SQ: 6 PIECE |
|------------------|---------------------|-------------|



05



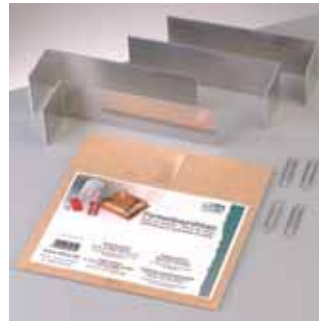
10

### Silicone rubber NV:

- |                  |   |             |
|------------------|---|-------------|
| <b>95 751 05</b> | Silicone rubber NV, with binder,<br>500 g   | SQ: 4 PIECE |
| <b>95 751 10</b> | Silicone rubber NV, with binder,<br>1.000 g | SQ: 2 PIECE |
| <b>95 751 50</b> | Silicone rubber NV, with binder,<br>5.000 g | SQ: 1 PIECE |

### Silicone rubber NV:

Low viscose, highly elastic casting, cold dusky vulcanizing, free of dissolver, especially for the production of negative shapes with lightly undercuts and uncomplicated shaping. Air-drying.



12



20

### Mould frame:

- |                  |                                    |             |
|------------------|------------------------------------|-------------|
| <b>95 753 12</b> | Mould frame, 120 × 120 × 50 mm     | SQ: 1 PIECE |
| <b>95 753 14</b> | Mould frame,<br>120 × 120 × 100 mm | SQ: 1 PIECE |
| <b>95 753 20</b> | Mould frame, ø 200 mm × 50 mm      | SQ: 3 PIECE |

### Mould frame:

Make up the frame to desired size and use masking tape to seal the inside edges. Use masking tape to secure the frame to the base sheet. Add a layer of plasticine to build the inside of the frame to the required depth. Dust with talc. Set the object to be moulded in the plasticine. Make a hole in the plasticine, to form a locating lug. Fill with silicone and when dry remove the Plasticine. Now powder the hardened silicone layer with talc and fill the remaining mould part with silicone. The talc acts as a release agent, so the mould halves can be separated easily.



### Binder:

- |                  |               |             |
|------------------|---------------|-------------|
| <b>95 752 01</b> | Binder, 20 ml | SQ: 3 PIECE |
|------------------|---------------|-------------|



25



75

### Casting resin with hardener:

- |                  |                                      |             |
|------------------|--------------------------------------|-------------|
| <b>95 700 25</b> | Casting resin with hardener, 250 ml  | SQ: 4 PIECE |
| <b>95 700 75</b> | Casting resin with hardener, 750 ml  | SQ: 2 PIECE |
| <b>95 701 50</b> | Casting resin with hardener, 5.000 g | SQ: 1 PIECE |

### Polyester casting resin:

Crystal clear EFCO polyester casting resin is a colourless resin, which is mostly harmless in its hardened form. EFCO casting resin is a syrupy mass, which only turns to gel when the enclosed hardener is added and then hardens into a firm block in 3 to 5 hours depending on the quantity of hardener. The casting resin can be coloured with EFCO toner pastes.



99 / assorted colours



48 / blue



67 / green



89 / black

### Toning paste for casting resin:

- |                  |                                       |             |
|------------------|---------------------------------------|-------------|
| <b>95 703 ..</b> | Toning paste for casting resin, 20 ml | SQ: 6 PIECE |
|------------------|---------------------------------------|-------------|



520



620

### Hardener / Separating wax:

- |                  |                                   |             |
|------------------|-----------------------------------|-------------|
| <b>95 705 20</b> | Hardener for casting resin, 20 ml | SQ: 3 PIECE |
| <b>95 706 20</b> | Separating wax for moulds, 20 ml  | SQ: 6 PIECE |



### Resin cleaner:

- |                  |                       |             |
|------------------|-----------------------|-------------|
| <b>95 708 10</b> | Resin cleaner, 100 ml | SQ: 4 PIECE |
|------------------|-----------------------|-------------|



50



04

### Polishing paste / Wet emery paper:

- |                  |   |             |
|------------------|---|-------------|
| <b>95 707 50</b> | Polishing paste, 50 ml                          | SQ: 4 PIECE |
| <b>95 709 04</b> | Wet emery paper, 4 parts assorted, 140 x 230 mm | SQ: 5 PIECE |



01



02



03

### Casting moulds:

- |                  |  |             |
|------------------|--|-------------|
| <b>95 711 01</b> | Casting mould, hemispheres, 4 parts        | SQ: 1 PIECE |
| <b>95 711 02</b> | Casting mould, heart + round form, 4 parts | SQ: 1 PIECE |
| <b>95 711 03</b> | Casting mould small, small forms, 6 parts  | SQ: 1 PIECE |



### Soap dream glycerine soap:

- |                  |  |           |
|------------------|--|-----------|
| <b>35 500 01</b> | Soap dream glycerine soap, loose / kilos | SQ: 25 KG |
| <b>35 500 02</b> | Soap dream glycerine soap, 250 g         | SQ: 6 CUP |
| <b>35 500 05</b> | Soap dream glycerine soap, 500 g         | SQ: 6 CUP |
| <b>35 500 25</b> | Soap dream glycerine soap, 2.500 g       | SQ: 1 CUP |

### Soap dream glycerine soap:

Transparent soap made from natural raw materials is the ideal craft for all ages!  
 Simple to use: Heat the required amount of soap in the microwave (300 – 400 W, for, 3 – 10 min depending on quantity and setting), on the hob in a bowl immersed in boiling water or in the oven at 80 ° – 90 ° C. Children should be supervised! Add perfumed oil, if desired. Pour liquid soap in a suitable mould and leave to cool approx. 10 – 30 minutes. Take the solidified soap from the shape and the soap dream is complete!



08 / yellow

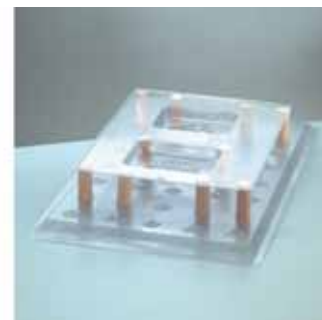
28 / red

48 / blue

67 / green

### Colouring liquid:

- |                  |  |             |
|------------------|--|-------------|
| <b>35 515 ..</b> | Colouring liquid, for Soap dream glycerine soap, 10 ml | SQ: 6 PIECE |
|------------------|--|-------------|



### Casting frame universal:

- |                  |   |             |
|------------------|---|-------------|
| <b>95 754 00</b> | Casting frame universal, 11 parts, 38 x 24 cm | SQ: 1 PIECE |
|------------------|---|-------------|



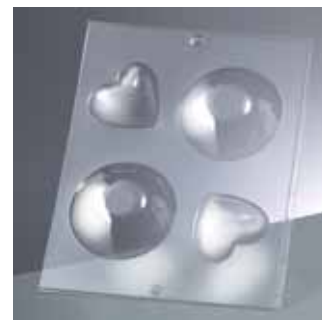
01



02



03



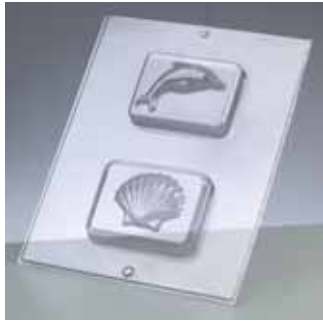
05



06

### 3-D Soap casting moulds:

- |                  |   |           |
|------------------|---|-----------|
| <b>95 713 01</b> | 3-D Soap casting mould, round + square / 2 parts, 75 x 55 mm / 80 x 55 mm | SQ: 1 SET |
| <b>95 713 02</b> | 3-D Soap casting mould, square / 2 parts, 70 x 70 mm / 60 x 40 mm         | SQ: 1 SET |
| <b>95 713 03</b> | 3-D Soap casting mould, square / 2 parts, 90 x 90 mm / 60 x 40 mm         | SQ: 1 SET |
| <b>95 713 05</b> | 3-D Soap casting mould, round + heart / 2 parts, 85 mm / 62 mm            | SQ: 1 SET |
| <b>95 713 06</b> | Soap casting mould, shell + snail / 2 parts, 120 x 70 mm / 80 mm          | SQ: 1 SET |



01



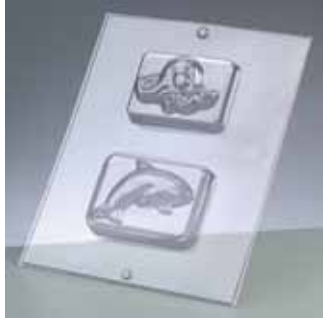
02



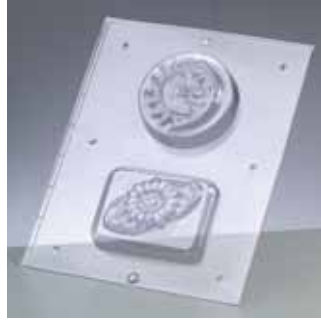
09



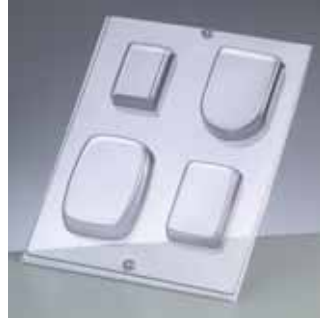
10



03



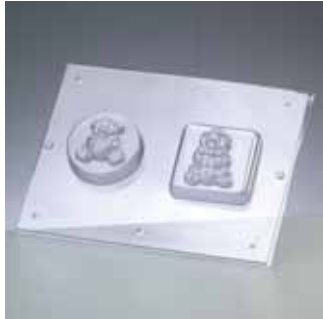
04



11



12



05



06



16



18



07



08



20



21

**Soap casting moulds:**

- 95 714 01 Soap casting mould, dolphin + shell / 2 parts ☞ SQ: 1 PIECE
- 95 714 02 Soap casting mould, strawb.,cherry,lemon / 3 parts ☞ SQ: 1 PIECE
- 95 714 03 Soap casting mould, whale, octopus / 2 parts ☞ SQ: 1 PIECE
- 95 714 04 Soap casting mould, flower,sun-moon / 2 parts ☞ SQ: 1 PIECE
- 95 714 05 Soap casting mould, clown + bear / 2 parts ☞ SQ: 1 PIECE
- 95 714 06 Soap casting mould, seahorse / 2 parts ☞ SQ: 1 PIECE
- 95 714 07 Soap casting mould, lemon,flower,star / 4 parts ☞ SQ: 1 PIECE
- 95 714 08 Soap casting mould, apple,heart,flower / 3 parts ☞ SQ: 1 PIECE

**Soap casting moulds:**

- 95 714 09 Soap casting mould, bear, frog / 2 parts ☞ SQ: 1 PIECE
- 95 714 10 Soap casting mould, ball, rectangle / 4 parts ☞ SQ: 1 PIECE
- 95 714 11 Soap casting mould, rectangular / 4 parts ☞ SQ: 1 PIECE
- 95 714 12 Soap casting mould, maritime / 2 parts ☞ SQ: 1 PIECE
- 95 714 16 Soap casting mould, horse,owl,hedgehog / 3 parts ☞ SQ: 1 PIECE
- 95 714 18 Soap casting mould, Niko, angel, star / 3 parts ☞ SQ: 1 PIECE
- 95 714 20 Soap casting mould, sea animals / 3 parts ☞ SQ: 1 PIECE
- 95 714 21 Soap casting mould, massage soap / 4 parts ☞ SQ: 1 PIECE

# Modur profi model hard foam



**Cut out and glue rigid foam sheets, give the surface a structure, possibly fill in the joints, apply base coat and colouring. Finished!**

## Working with rigid foam:

Modur can be cut with a knife or sawn with a fine saw. In order to obtain a rock-type structure, it is important to jab into the rigid foam rather than to cut it and then to break pieces out in an upward direction. The areas where the foam is broken off thus gain an interesting rough structure. **Tip:** Vacuum up left over pieces of rigid foam, which can no longer be used, or dust from sanding down and dispose of with non-recyclable waste.

**Gluing:** Modur is a thermosetting material and is thus resistant to the solvents found in common contact adhesives. What is more, Modur is resistant to hot-melt adhesives. Thus the use of hot-melt adhesives with a hot glue gun is recommended. This adhesive does not cool down immediately on the rigid foam and so corrections can be carried out for a short time. After a short cooling down period work can continue. Standard white wood glue can also be used. Here the setting time in the joints is at least 24 hours. The rigid foam parts should preferably be held together with cocktail sticks inserted horizontally to the joints in the foam until the glue has set. When using contact adhesive (e.g. Uhu or similar) coat both sides, leave to dry slightly until the gluing surfaces can be touched without any strands sticking to the fingers. Then briefly press together very firmly, whereby the parts should be placed together so that they fit exactly. No correcting is possible. Due to the cutting of the rigid foam pieces small joint gaps will always arise. These can be filled in by inserting an amount of filler.



00





01



02



## Modur profi model hard foam:

- |                  |   |  |
|------------------|---|--|
| <b>10 949 00</b> | Modur profi model hard foam, 250x250x20 + 40 mm, 24 + 12 pcs. | SQ: 1 SET  |
| <b>10 949 01</b> | Modur profi model hard foam, 250 x 250 x 20 mm                |  SQ: 24 PIECE |
| <b>10 949 02</b> | Modur profi model hard foam, 250 x 250 x 40 mm                |  SQ: 12 PIECE |

## Colouring the surface:

The surface of Modur can be coloured with all paints – i.e. also spray paints containing solvents. However, the most simple and economical method is to use EFCO acrylic paints. The paint is applied directly to the rigid foam. No additional plaster bandaging or filler are required. When the paint is dry, apply a small amount of white paint to an approx. 2 cm wide brush and stroke the brush on a surface until it is almost dry. With this the rigid foam rocks are painted, whereby all parts and edges jutting out are then given a light shimmer and thus stand out. The same can be done with the colours grey or brown. If a certain amount of casein white glue is added to the base colour, sand or decorative stones can be sprinkled into the fresh colour or Flocky velvet powder can be blown onto it.



**Soapstone:**

**19 246 01** Soapstone cube, Night-light holder, 6 x 6 x 4 cm SQ: 2 PIECE



09



10

**Soapstone:**

**19 243 09** Soapstone blank, cat, ~ 8 – 10 cm SQ: 2 PIECE

**19 243 10** Soapstone blank, elephant, ~ 8 – 10 cm SQ: 2 PIECE



01



02



03



04



05



06



07



08

**Soapstone:**

**19 243 01** Soapstone blank, Tortoise, ~ 8 – 10 cm SQ: 2 PIECE

**19 243 02** Soapstone blank, Owl, ~ 8 – 10 cm SQ: 2 PIECE

**19 243 03** Soapstone blank, Heart, ~ 6 – 8 cm SQ: 2 PIECE

**19 243 04** Soapstone blank, Frog, ~ 8 – 10 cm SQ: 2 PIECE

**19 243 05** Soapstone blank, Bird, ~ 8 – 10 cm SQ: 2 PIECE

**19 243 06** Soapstone blank, Penguin, ~ 8 – 10 cm SQ: 2 PIECE

**19 243 07** Soapstone blank, dolphin, ~ 8 – 10 cm SQ: 2 PIECE

**19 243 08** Soapstone blank, fish, ~ 6 – 8 cm SQ: 2 PIECE



00 / assorted



01 / white



assorted



02 / white



32 / light pink



61 / light green



65 / green



75 / brown



86 / grey



89 / black

## Soapstone:

19 240 99 Soapstone, shrink wrapped, 1,5 kg

SQ: 2 BAG



399 / colourless



100 / orange

## Special-Soapstonepolish / Emery paper:

19 243 99 Special-Soapstonepolish, result 1m<sup>2</sup>, 20 g

SQ: 6 PIECE

18 301 00 Emery paper, grain 80 / 120 / 240, 23 x 9,3 cm, 6 pc.

SQ: 5 BAG



01



02



## Soapstone:

19 240 .. Soapstone, loose

SQ: 30 KG

19 242 .. Soapstone, single shrink wrapped, Label with weight

SQ: 30 KG

## Soapstone:

19 244 01 Set Soapstone, 7 parts

SQ: 2 SET

19 244 02 Complete set Soapstone, 8 parts

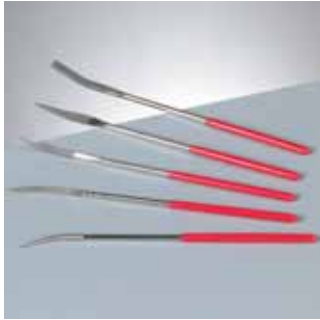
SQ: 2 SET



### Soapstone oil:

**93 143 01** Soapstone oil, 100 ml

SQ: 5 PIECE



305



306



501



510



605

### Wood and soapstone rasp:

**18 153 05** Diamond file set, 5 parts, 14 cm

SQ: 1 PIECE

**18 153 06** Diamond file set, 6 parts, 16 cm

SQ: 1 PIECE

**18 155 01** File, 14 cm

SQ: 10 PIECE

**18 155 10** File set, 10 parts, 14 cm

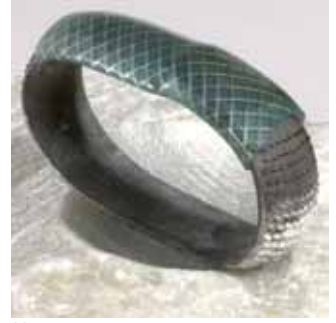
SQ: 1 SET

**18 156 05** File set, 5 parts, 18 cm

SQ: 1 SET



01



02



03



04



08



10



20

### Wood and soapstone rasp:

**18 150 01** Soapstone file, half-round, 20 cm

SQ: 6 PIECE

**18 150 02** Small rasp, ø 65 mm

SQ: 2 PIECE

**18 150 03** Wood and soapstone rasp, 3 parts, 30 cm

SQ: 3 SET

**18 150 04** Soapstone rasp set, 3 parts, 20 cm

SQ: 1 SET

**18 150 08** Soapstone rasp set, 8 parts, 20 cm

SQ: 1 SET

**18 150 10** Soapstone rasp set, 8 parts, 25 cm

SQ: 1 SET

**18 150 20** File set, 3 parts, 20 cm

SQ: 3 SET



04



08

### Soapstone chisel:

**18 280 04** Soapstone chisel, 4 parts, 15 cm SQ: 1 SET

**18 280 08** Soapstone chisel, 8 parts, 15 cm SQ: 1 SET



27 566 21 / Elke Fox



27 534 85 / Maja Hanselmann



06



08



27 150 40 / Aline Fayet



27 000 43 / Maja Hanselmann



11

### Wood carving tool:

**18 151 06** Carving chisel set, 6 parts, 16 cm SQ: 1 SET

**18 151 08** Carving chisel set, 8 parts, 14 cm SQ: 1 SET

**18 151 11** Carving chisel set, 11 parts, 14 cm SQ: 1 PIECE

### Book german:

**27 566 21** Book german, Speckstein kreativ gestalten, A 5, 32 pages  SQ: 1 PIECE

**27 534 85** Book french, Der kleine Speckstein – Kurs, 19 × 26 cm, 64 pages  SQ: 1 PIECE

**27 150 40** Book german, Speckstein – Einführungskurs, 21 × 28 cm, Hardcover, 64 pages / pattern  SQ: 1 PIECE

**27 000 43** Book german, Speckstein ideenreich formen, A 5, 36 pages  SQ: 1 PIECE



**Fret saw set:**

**18 352 02** Fret saw set, 5 parts

SQ: 1 PIECE



**Fret saw:**

**18 353 00** Fret saw, made of steel tubing

SQ: 5 PIECE



**Fret saw table with clamp:**

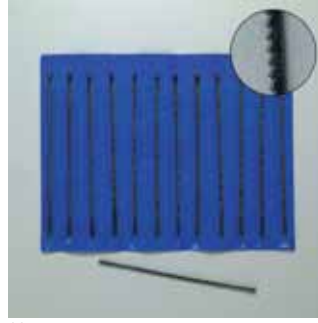
**18 366 00** Fret saw table with clamp

SQ: 5 PIECE



**Plywood:**

- 14 710 02** Plywood, popular, 4 mm / A2 594 x 420 mm SQ: 5 PIECE
- 14 710 03** Plywood, popular, 4 mm / A3 420 x 297 mm SQ: 5 PIECE
- 14 710 04** Plywood, popular, 4 mm / A4 297 x 210 mm SQ: 5 PIECE



02



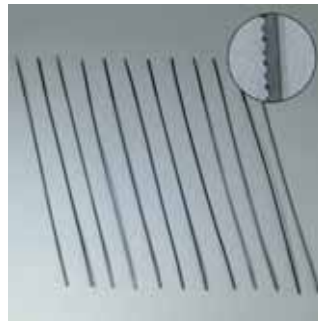
04



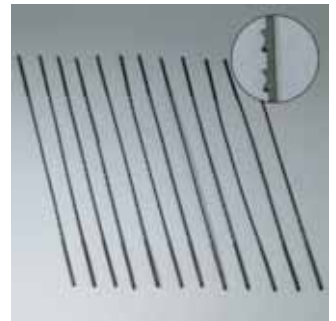
06

**Fret saw blades:**

- 18 354 02** Fret saw blades, size 2, 12 x 12 pcs. SQ: 1 BAG
- 18 354 04** Fret saw blades, size 4, 12 x 12 pcs. SQ: 1 BAG
- 18 354 06** Fret saw blades, size 6, 12 x 12 pcs. SQ: 1 BAG



05



09

**Fret saw blades:**

- 18 356 05** Fret saw blades, multi-tooth no. 5, 12 pcs. SQ: 5 BAG
- 18 356 09** Fret saw blades, multi-tooth no. 9, 12 pcs. SQ: 5 BAG



01



03

**Fret saw blades:**

- 18 355 01** Fret saw blades, size 1, round, 12 x 12 pcs. SQ: 1 BAG
- 18 355 03** Fret saw blades, size 3, round, 12 x 12 pcs. SQ: 1 BAG



01 / black



02 / black

### Clockhands :

- 18 558 01** Clockhands, plastic, 60 mm, 10 pcs. SQ: 5 BAG
- 18 558 02** Clockhands, metal, 70 mm, 10 pcs. SQ: 1 BAG



01 / gold



02 / black



03 / black



01 / black

### Clockhands :

- 18 556 01** Clockhands, 38 / 48 mm, 1 set / 3 parts SQ: 5 BAG
- 18 556 02** Clockhands, metal, 43 / 55 / 70 mm, 1 set / 4 parts SQ: 5 BAG
- 18 556 03** Clockhands, 35 / 50 mm, 1 set / 3 parts SQ: 5 BAG
- 18 557 01** Clockhands, 30 / 40 mm, 1 set / 3 parts SQ: 5 BAG



### Quartz clockworks with clockhands:

- 18 553 13** Quartz clockwork + clockhands, clock-face 2,3 - 5,5 mm, 1 pc. / 8 parts SQ: 5 PIECE
- 18 553 15** Quartz clockwork + clockhands, clock-face 5,0 - 7,4 mm, 1 pc. / 8 parts SQ: 5 PIECE
- 18 553 21** Quartz clockwork + clockhands, clock-face 11,9 - 14,0 mm, 1 pc. / 8 parts SQ: 5 PIECE

### Quartz clockworks:

- 18 554 13** Quartz clockwork, clock-face 2,3 - 5,5 mm, 5 parts SQ: 100 PIECE
- 18 554 15** Quartz clockwork, clock-face 5,0 - 7,4 mm, 5 parts SQ: 100 PIECE
- 18 554 21** Quartz clockwork, clock-face 11,9 - 14,0 mm, 5 parts SQ: 100 PIECE



27 452 22 / Reichmann & Scharfschwerdt

### Book german:

- 27 452 22** Book german, Uhren & Thermometer, A 5, 32 pages / 1 sheet pattern SQ: 1 PIECE



### Linoleum sheet:

- |                  |                                |              |
|------------------|--------------------------------|--------------|
| <b>18 510 03</b> | Linoleum sheet, DIN A3, 3,5 mm | SQ: 5 PIECE  |
| <b>18 510 04</b> | Linoleum sheet, DIN A4, 3,5 mm | SQ: 10 PIECE |
| <b>18 510 05</b> | Linoleum sheet, DIN A5, 3,5 mm | SQ: 10 PIECE |
| <b>18 510 06</b> | Linoleum sheet, DIN A6, 3,5 mm | SQ: 10 PIECE |



### Paint roller:

- |                  |                      |             |
|------------------|----------------------|-------------|
| <b>18 131 00</b> | Paint roller, 60 mm  | SQ: 1 PIECE |
| <b>18 132 00</b> | Paint roller, 90 mm  | SQ: 1 PIECE |
| <b>18 133 00</b> | Paint roller, 120 mm | SQ: 1 PIECE |



100



400

### Linoleum cutting tool:

- |                  |  |              |
|------------------|--|--------------|
| <b>18 121 00</b> | Linoleum / wood cutting tool, Set                        | SQ: 5 PIECE  |
| <b>18 124 00</b> | Linoleum / wood cutting tool, Wooden handle with ejector | SQ: 10 PIECE |



01



02



03



05



04

### Linoleum cutting tool:

- |                  |   |              |
|------------------|---|--------------|
| <b>18 123 01</b> | Linoleum / wood cutting tool, Retaining clamp no. 1   | SQ: 10 PIECE |
| <b>18 123 02</b> | Linoleum / wood cutting tool, Decorating iron no. 2   | SQ: 10 PIECE |
| <b>18 123 03</b> | Linoleum / wood cutting tool, Hollow iron no. 3, 3 mm | SQ: 10 PIECE |
| <b>18 123 04</b> | Linoleum / wood cutting tool, Hollow iron no. 4, 4 mm | SQ: 10 PIECE |
| <b>18 123 05</b> | Linoleum / wood cutting tool, Precutting knife        | SQ: 10 PIECE |



### Steamer:

- 25 000 43** Steamer, profi, using height 1m, 230 V / 1250 W ❌ SQ: 1 PIECE
- 25 000 44** Steamer extension, profi, 50 cm ❌ SQ: 1 PIECE
- 25 004 21** Heater unit for steamer, replacement heater, prof., 230 V / 1250 W ❌ SQ: 1 PIECE



### Hobby Steamer:

- 25 000 46** Steamer, Hobby, 115 cm ❌ SQ: 1 PIECE



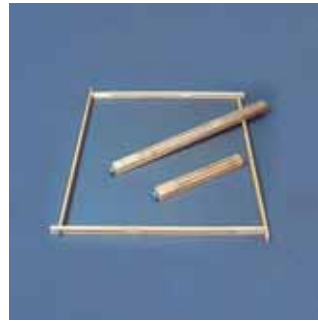
### Steamer tube (card):

- 25 070 35** Steamer tube (card), 1065xD50x5 mm ❌ SQ: 1 PIECE
- 25 070 36** Steamer tube (card), 115 cm ❌ SQ: 1 PIECE
- 25 070 39** Steamer tube (card), 1585xD50x5 mm ❌ SQ: 1 PIECE



### Steamer Paper:

- 25 074 81** Steamer paper, 500 x 1 m ❌ SQ: 1 PIECE
- 25 074 82** Steamer paper, 500 x 1,5 m ❌ SQ: 1 PIECE



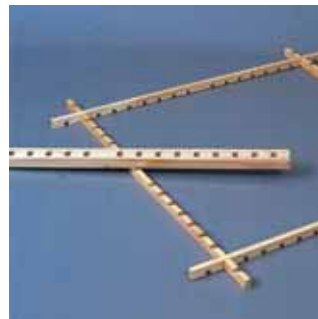
10



11

### Silk painting frame:

- 25 383 10** Silk stretching frame, 100x100cm / 25x15mm ☑️ SQ: 1 PIECE
- 25 383 55** Silk stretching frame, 50cm ☑️ SQ: 1 PIECE
- 25 384 11** Silk stretching frame, 100x100cm / 38x20mm ☑️ SQ: 1 PIECE



### Batik frame:

- 25 380 11** Batik frame, 100x100cm ☑️ SQ: 1 PIECE



### Three point pins for silk:

- 25 482 10** Three point pins, 100 pcs. ☑️ SQ: 5 CUP



### Burning station PROFI:

**18 400 03** Burning unit PROFI, Pyrography, adjustable SQ: 1 PIECE



### Burning station MINI:

**18 400 02** Burning unit MINI, Pyrography, not adjustable SQ: 1 PIECE



### Pyrography tool:

**18 400 01** Woodburning pen, with 6 tips and stand SQ: 1 PIECE



06



07

### Spare burning points:

**18 401 06** Spare burning points, 6 parts, assorted SQ: 2 SET

**18 401 07** Burning stamps, 7 parts, assorted SQ: 2 SET



01



02



03

### Branding Loops:

**18 402 01** Branding Loops, pointed / for 1840002+1840003, 1 pc. SQ: 3 PIECE

**18 402 02** Branding Loops, round / for 1840002 + 1840003, 1 pc. SQ: 3 PIECE

**18 402 03** Branding Loops, round/flat/for 1840002+1840003, 1 pc. SQ: 3 PIECE



11



12



13



14

### Branding Loops:

**18 402 11** Branding Loops, star / for 1840002+1840003, 1 pc. SQ: 3 PIECE

**18 402 12** Branding Loops, moon / for 1840002+1840003, 1 pc. SQ: 3 PIECE

**18 402 13** Branding Loops, oval / for 1840002+1840003, 1 pc. SQ: 3 PIECE

**18 402 14** Branding Loops, heart / for 1840002+1840003, 1 pc. SQ: 3 PIECE



### Painting top:

**99 445 16** Painting top, for plastic bottle SQ: 10 PIECE



### Empty bottles:

- 93 817 05** Empty bottle, with painting top, 50 ml SQ: 10 PIECE
- 93 817 10** Empty bottle, with painting top, 100 ml SQ: 10 PIECE
- 93 817 20** Empty bottle, with painting top, 200 ml SQ: 10 PIECE



09



10

### Empty glass jars:

- 93 114 09** Empty glass jars, 20 ml SQ: 16 PIECE
- 93 114 10** Empty glass jars, 50 ml SQ: 4 PIECE



04



01

### Scatter container:

- 99 110 04** Scatter container, large, empty, ø 55 mm h 77 mm SQ: 5 PIECE
- 99 110 01** Scatter containers, small, empty, ø 36 mm h 45 mm SQ: 10 PIECE



05 / transparent



06 / transparent



07 / transparent

### Empty container (PP):

- 99 110 05** Empty container, 155 ml, ø 69 mm h 65 mm SQ: 20 PIECE
- 99 110 06** Empty container, 280 ml, ø 95 mm h 65 mm SQ: 20 PIECE
- 99 110 07** Empty container, 1000 ml, ø 120 mm h 120 mm SQ: 10 PIECE



### Empty container:

- 99 110 02** Empty container, small, with lid, ø 36 mm h 45 mm SQ: 20 PIECE



### Empty tube:

**99 110 03** Empty tube, with stopper,  $\varnothing$  20 mm h 50 mm SQ: 20 PIECE



### Sieve top:

**99 401 54** Sieve tops, for enamel 200 g,  $\varnothing$  55 mm SQ: 10 PIECE



### Gutta bottles:

**99 445 11** Gutta bottles, without nozzle, 50 ml SQ: 10 PIECE

**99 445 12** Gutta bottles, without nozzle, 25 ml SQ: 10 PIECE



### Sieve top:

**93 719 03** Sieve tops,  $\varnothing$  20 mm, 3 pcs. SQ: 5 PIECE

**93 719 20** Sieve tops,  $\varnothing$  20 mm SQ: 20 PIECE



### Deco sieve top little tube:

**99 413 42** Deco sieve top little tube,  $\varnothing$  20 mm h 50 mm SQ: 10 PIECE



51

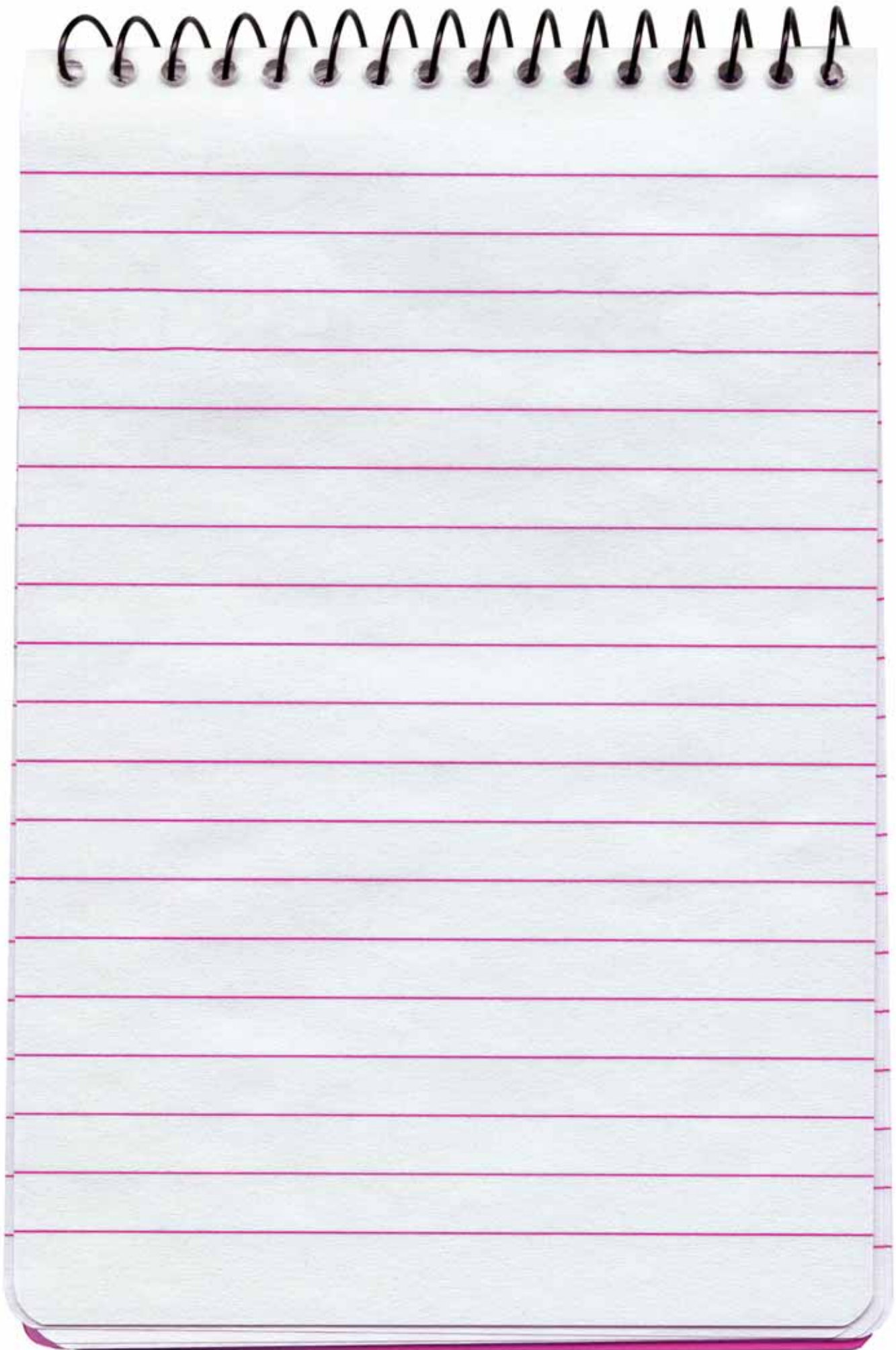


52

### Sieve top:

**99 401 51** Sieve tops,  $\varnothing$  36 mm, 2 pcs. SQ: 5 BAG

**99 401 52** Sieve tops,  $\varnothing$  36 mm SQ: 10 PIECE





hobbygross Erler GmbH  
Große Ahlmühle 10  
76865 Rohrbach  
Germany  
Tel. +49 63 49 / 99 34 0  
Fax +49 63 49 / 99 34 26  
e-mail: [info@efco.de](mailto:info@efco.de) <http://www.efco.de>